

### Cabin Regulations

- **CHECK-IN** time after 3:00 P.M. on the first day of the cabin reservation.
- **CHECK-OUT** time is 11:00 A.M. on the day of departure.
- **NO SMOKING IN THE CABINS IS ALLOWED**
- **ALL VISITORS** must depart the park between the hours of 10:30 P.M. and 6:30 A.M.
- Quiet hours are 10:30 PM to 6:00 AM.
- Vehicles shall be parked in designated areas.
- All Rules & Regulations of the Clay County Conservation Board are in effect.
- **FAILURE** to clean the facility & grounds or cabin will result in additional charges.
- Dogs are allowed but **must be** in kennel ports if housed inside and on leashes if outside.
- **Failure** to keep dogs in kennel ports inside may result in additional charges.

### Campground Regulations

- To reserve a site, you must either reserve a site on-line or have a camper/vehicle or tent in place and each site paid in full.
- Extra vehicles will be parked in designated overflow parking areas.
- Campers must be backed into sites.
- No washing of vehicles or campers in campground with park water
- Keep pets on a leash at all times.
- Firewood gathering will not be allowed.
- May not occupy a campsite longer than 14 days out of any 28 day period.
- Visitors must leave the park between 10:30 P.M. and 6:30 A.M.
- Camping privileges may be refused as
  1. Violation of State Law;
  2. Violation of any rule of the Clay County Conservation Board;
  3. Failure to obey a Peace Officer.

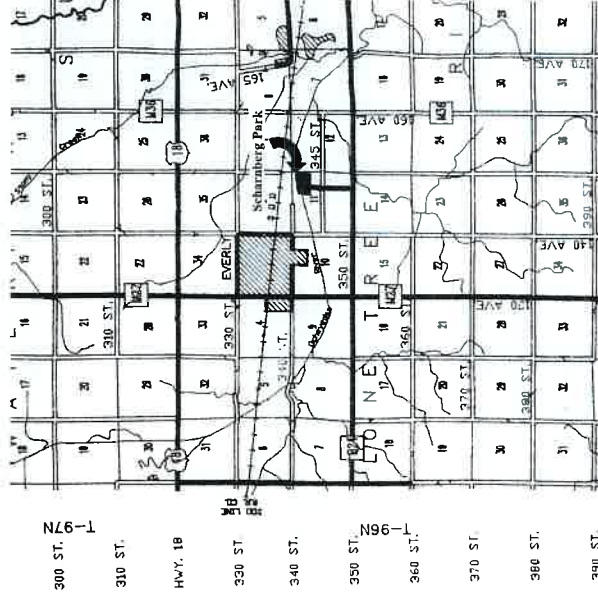
**Rangers on duty are certified peace officers that CAN and WILL enforce all laws in the State of Iowa.**

### Directions to Scharnberg Park

**From Spencer:** Go west on 4th Street, which turns into County Road B24 for 8 miles. Turn North on 145th Ave for 3/4 of a mile and you are there. Stay on the blacktop into the Park.

**From Everly:** Go South of Everly on County Road M27 for 1 mile and turn East on County Road B24 for 1 3/4 miles. Turn North on 145th Ave for 3/4 mile and you are there. Stay on blacktop into the Park.

**Remember:** Look for brown and white County Arrowhead Signs to assist you with directions.



Scharnberg Park

3430 145th Ave., Everly, Iowa

For Cabin, Shelter & Camping Reservations:  
[www.mycountyparks.com](http://www.mycountyparks.com)

For PARK Information:  
[www.claycountyparks.com](http://www.claycountyparks.com) or  
712-262-2187

Managed by the  
Clay County Conservation Board

# Scharnberg Park



For Cabin, Shelter & Camping Reservations:  
[www.mycountyparks.com](http://www.mycountyparks.com)

For PARK Information:  
[www.claycountyparks.com](http://www.claycountyparks.com) or  
712-262-2187

Managed by the  
Clay County Conservation Board



# Scharnberg Park



Scharnberg Park is a 45 acre park that hosts a 15 handicap accessible fishing pier. Main species of fish include: Bass, Bluegill and Channel Catfish. For the non fisherman, the park also has playgrounds, horseshoes, basketball court and a swimming beach which is perfect for sunbathing, swimming or even building sand castles.

### Come Enjoy!



The Park also sports a campground with 61 individual campsites. Each of these include: rural water, 20-30-50 amp breakers, cable TV and access to wireless internet. All these amenities are included in the camping fee.



Scharnberg Park has an enclosed shelter house that may be rented for your events. The shelter house is air conditioned and has plenty of countertop space for serving food and beverages and includes a double sink that makes cleanup a snap. Shelter rental is \$75 per day.



Concessions and firewood are available.

MasterCard and Visa Accepted

## CABIN INFORMATION

All 3 cabins have wireless internet available, cable TV & heating & A/C for year around use and pots and pans, plates, silverware, toaster, coffee pot & cutting board.



### Maple Cabin Features:

- 18' x 20' cabin (360 sq. ft.)
- Sleeps 4, 1 full size bed, 1 full size hide-a-bed couch
- Modern bathroom w/tub & shower
- Kitchenette-microwave, refrigerator/freezer, electric range/oven, sink & countertop, hot & cold water
- Table with 4 chairs
- Picnic table & fire ring



### Oak Cabin Features:

- 24' X 24' cabin (1056 sq. ft. with 2 lofts)
- Sleeps 10-12, 3 queen & 1 double bed and 2 hide-a-bed couches
- Modern bathroom w/tub & shower
- Kitchenette-microwave, refrigerator/freezer, electric range/oven, sink & countertop, hot & cold water
- Table with 6 chairs
- Picnic table & fire ring on brick patio



### Pine Cabin Features:

- Handicap accessible
- 18' X 40' cabin (720 sq. ft.)
- 8' x 16', 4 seasons sun room
- Sleeps 8, 1 queen & 1 full size bed & 4 roll-a-ways
- Modern bathroom w/ handicap shower
- Kitchenette-microwave, refrigerator/freezer, electric range/oven, sink & countertop, hot & cold water
- Table with 6 chairs
- Picnic table & fire ring, parking nearby

### Rates:

Maple — \$125 per night plus tax = 131.25

Oak — \$175 per night plus tax = 183.75

Pine — \$200 per night plus tax = 210.00

A 2 night minimum required on weekends, 3 night minimum for inclusion of a holiday.

### Renters Will Need to Bring for all 3 cabins

Bedding, dish soap, dish cloth, all food & beverages, bath linens & toiletries, radios or computer set up for wireless internet (if desired), lawn chairs.

### Supplies Provided

TV, pots & pans, toilet tissue, disinfectant cleaner, broom, dustpan, mop & sponge, refuse container with bags (put bags in park dumpster upon check-out)

### Special Regulations

- NO SMOKING (Pursuant to the Iowa Smoke Free Air Act)
- KEG BEER is prohibited
- Cabin furniture must remain in the cabin
- No pets in cabins unless kept in a kennel (Leashed while outside)
- **Clean-Up Responsibilities**
- YOU are responsible to clean the cabin and the surrounding area as outlined on the checklist provided in the facility, this includes dog clean up.
- Should damage to the facility occur, your credit card may be charged to reimburse the Clay County Conservation Board for the cost of the repairs.

## CAMPGROUND INFORMATION

- **61 Electrical sites.** Spacious sites that include cable TV and available wireless internet, Includes rural water and 20-30-50 amp service, fire ring and picnic table. 21 sites have full sewer hookups.
- **37 sites** can be reserved on-line (1, 3, 4, 6, 8, 9, 10, 11, 15, 16, 17, 18, 19, 20, 22, 23, 24, 25, 30, 31, 32, 33, 34, 35, 40, 41, 42, 47, 48, 51, 53, 54, 55, 56, 57, 60, 61)
- **Electrical sites** are \$20.00 per night. Campers may pitch one tent per registered electrical site along with their camper.
- **Sewer sites** \$25.00 per night (Sites: 1, 4, 6, 8, 10, 12, 14, 16, 18, 20, 21, 44, 46, 50, 52, 54, 56, 58, 59, 60, and 61).
- **5 Non-electric tent sites** available at \$10.00 per night.
- Only two tents allowed per registered tent site.
- **Shower house** with 7 individual showers, 2 family showers, a men's and women's bathroom.

